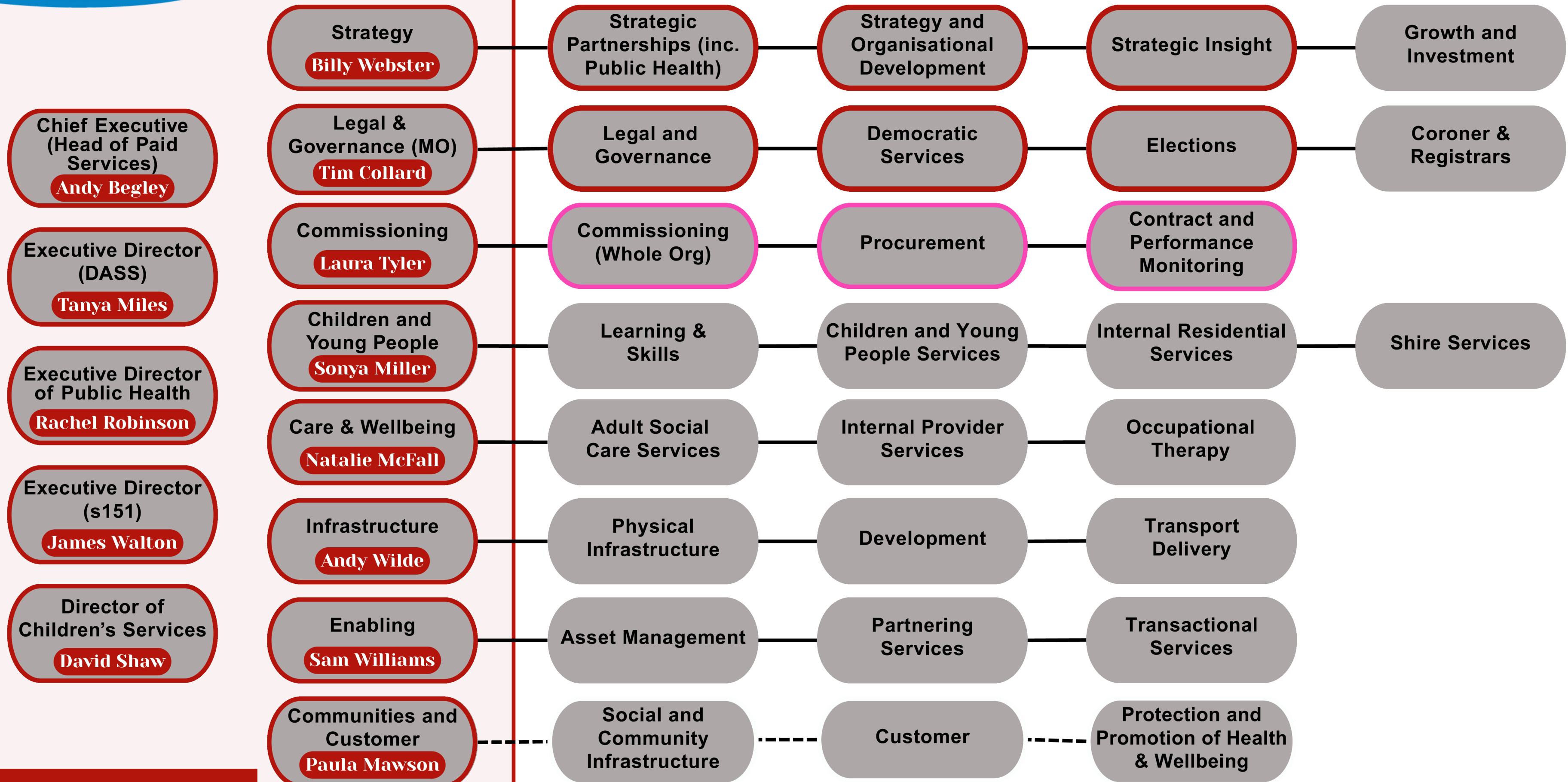


## Organisational Structure



# Operating Model Wider Structure

## Strategic Partnerships (inc. Public Health)

- Public health (integration. healthy population and ICB)
- SSC3 (including community safety and safeguarding, Marches)
- Domestic Abuse

## Strategy and Organisational Development

### Strategy Development

- The Shropshire Plan. Health & Wellbeing Strategy, ICP Strategy, Community Safety Strategy, Safeguarding Strategy and Children & young people (annual statutory reports). Adults, Workforce. IT etc)
- MTFS, Growth
- Climate Change
- Strategic Highways & Transport
- Coproduction
- Market Sustainability Plan
- Communications and Marketing
- Organisational Development and Design
- Joint Training
- Programme Management Office

## Strategy

Strategic oversight and partnership working

- Insight and VCSE and EDI
- Intelligence
- Data
- Strategic risks
- Risk and business continuity
- KPIs
- AGS
- Engagement and Consultation

## Strategic insight

- Economic Growth
- External bidding
- Tourism strategy
- Commercial (Income)

## Growth and Investment

# Operating Model Wider Structure

## Legal and Democratic Services

- Legal Services
- Member and democratic support
- Returning Officer Support and Elections Team

## Overview and Scrutiny

- Overview and scrutiny

## RIPA policy and guidance

## Legal, Governance & Planning

Ensuring the legality of Council decision-making through appropriate governance and assurance

- Information governance
- Complaints
- Internal audit
- Planning Policy
- Development management, land charges, street naming and numbering

## Policy and Governance

- Coroners
- Registrars

## Coroners and Registrars

# Operating Model Wider Structure

## Commissioning Procurement (Whole Org)

- Start well, live well, age well commissioning
- Business support (Brokerage, FAT, Client reconciliation, contracts)
- Commercial
- Other commissioning requirements

## Procurement

- Procurement lead and team

## Commissioning

Central commissioning, procurement and contract management to deliver efficient and effective

- Waste management
- Bereavement services
- Housing/ CDC/ ST&R (matrix to housing)
- Leisure (and transitional delivery)
- Insurance
- Quality assurance for social care providers

## Contract & Performance Monitoring

## Operating Model Wider Structure

### Learning & Skills

- Education quality and safeguarding
- Education psychology and prevention
- EHCP team
- Virtual school
- Admissions/ Attendance/ EWS and inclusion
- Education and childcare sufficiency
- Education business support/ EMS/ School finance
- Shropshire Music Service
- School Library Services

### Internal Residential Services

- Internal Residential Services

### Children & Young People (CYP)

Enable CYP to remain safely with their families and thrive (living their best life and strong education outcomes), and, if not possible, to enable the most family-orientated approach to their support.

- Early help
- Compass and assessment
- Trees
- Case management including court team
- Disabled children
- Children looked after
- Leaving care
- Stepping stones
- Internal residential homes
- Adoption and fostering
- Independent Reviewing Unit
- Quality and improvement/ PSW
- Professional development/ SW workforce lead

### Children and Young People Services

- Shire Services

### Shire Services

# Operating Model Wider Structure

## Adult Social Care Services

- Quality assurance lead / PSW
- Professional Development Unit ILS
- Community social work teams
- Learning Disability
- Preparing for Adulthood
- Hospital social work
- Mental Health
- Redwoods and AMHP service
- Adult safeguarding
- Deprivation of Liberty Safeguards
- Continuing Healthcare
- Client property and appointeeship services
- Sensory impairment
- Emergency Social Work team

## Care & Wellbeing

Promote wellbeing independence and safeguard vulnerable adults

- START
- Enable
- Day services
- Four Rivers Nursing home
- Carers service

## Internal Provider Services

- Occupational Therapy Team

## Occupational Therapy



# Operating Model Wider Structure

## Physical Infrastructure

- Highway operations and mixed economy delivery
- Highways technical service and mixed economy design
- NWRR
- Policy and Environment Services
- National Landscapes
- Outdoor Partnerships
- Environment and maintenance and mixed economy and delivery/development
- Parking

## Transport Delivery

- Transport Operations
- Fleet

## Infrastructure

Management of physical infrastructure and spaces

## Planning and development services

- Planning development teams
- Planning enforcement
- Building control
- Highways development control
- Economic development
- Regeneration

## Development

# Operating Model Wider Structure

## Asset Management

- Property - Corporate landlord
- Asset Management Team
- Property Services Group Delivery (schools)
- Facilities
- IT Infrastructure

## Transactional Services

- Finance
- Revenues and Benefits
- Payroll
- IT Services

## Enabling

Operational support to the organisation

- HR
- Finance
- IT
- Executive and Business Support
- Occupational Health
- Health and Safety

## Partnering Services



# Operating Model Wider Structure

## Social and Community Infrastructure

- Housing / Homelessness
- Cornovii Developments Limited
- Shropshire Town & Rural Housing
- Welfare Support
- Resettlement
- Affordable Warmth

### Infrastructure (Social):

- Culture and communities
- Theatre services
- Museums and archives
- Community Hubs
- Libraries
- Sports development
- Heritage

## Customer

- Customer Service Centre (incl. Shropshire Local)
- First Point of Contact
- CCTV and Out of Hours

## Communities & Customer

Early intervention, prevention and protection

- Health Protection & Service Support Team
- Environmental Protection
- Housing Enforcement
- Ecology
- Private Water Supplies
- Public Health Funerals

- Trading Standards and Parking Enforcement
- Transactional Management and Licencing
- Emergency Planning
- Healthy Lives - social prescribing and statutory public health delivery
- Community outreach wellbeing team — statutory public health delivery

## Protection and Promotion of Health and Wellbeing